

Parks Committee Agenda
Jefferson County
Jefferson County Courthouse
311 S. Center Avenue, Room 203
Jefferson, WI 53549

Date: Monday, September 11, 2017

Time: 9:30 a.m.

Committee members: Foelker, Matt
Kelly, Mike
Nass, Steve
Payne, Laura
Tietz, Augie

1. Call to order
2. Roll call (establish a quorum)
3. Certification of compliance with the Open Meetings Law
4. Approval of the agenda
5. Approval of Park Committee minutes for July 10, 2017
6. Communications
7. Public comment (Members of the public who wish to address the Committee on specific agenda items must register their request at this time)
8. Discussion on Pohlmann Park Silo
9. Discussion on Flood Mitigation Property Management Plan
10. Discussion on Qualifications of Engineering Firms for Future Park Department Projects
11. Discussion and Possible Action on the Interurban Trail Project
12. Discussion and Possible Action on Garman Nature Preserve Sign Plan and Sign Implementation Plan
13. Discussion on Glacial Heritage Area (GHA) –Friends of GHA
14. Review of Financial Statements (June, 2017 and July, 2017) and Department Update – Parks Department
15. Discussion and Possible Action on 2018 Parks Department Budget
16. Discussion on the 2017 Dog Dayz of Summer Event
17. Discussion on Brew with a View 2017
18. Adjourn

Next scheduled meetings: October 2, 2017
November 6, 2017
December 4, 2017

A Quorum of any Jefferson County Committee, Board, Commission or other body, including the Jefferson County Board of Supervisors, may be present at this meeting.

Individuals requiring special accommodations for attendance at this meeting should contact the County Administrator 24 hours prior to the meeting at 920-674-7101 so appropriate arrangements can be made.

Parks Committee Minutes
Jefferson County
Jefferson County Courthouse
311 S. Center Avenue, Room 112
Jefferson, WI 53549

#5

Date: Monday, July 10, 2017

Time: 9:30 a.m.

Committee members: Foelker, Matt
Kelly, Mike
Nass, Steve
Payne, Laura
Tietz, Augie

1. **Call to order**

Tietz called the meeting to order at 9:32am

2. **Roll call (establish a quorum)**

Present: Tietz, Foelker, Nass, Kelly, Payne (@ 9:34)

Absent:

Others Present: Nehmer, Nimm, Hutter, Wiesmann, Ward, Wehmeier, Saxby

3. **Certification of compliance with the Open Meetings Law**

Meeting was noticed and posted according to law

4. **Approval of the agenda**

Nass/Foelker motion to approve the agenda as written. Motion passes 4/0

5. **Approval of Park Committee minutes for June 5, 2017**

Foelker/Nass motion to approve the minutes. Motion passes 4/0

6. **Communication**

Wehmeier – letter from Friends of Rose Lake

7. **Public comment (Members of the public who wish to address the Committee on specific agenda items must register their request at this time)**

No public comment

8. **Discussion and Possible Action on Request to Rent Cappie's Landing**

Tim Brown – Founders Float Paddle, Cappie's to RR. Shelter @ Rock River Park is rented. We would like to rope off a corral at Cappie's and are requesting to rent part of the park 7am-10am for mass boat launch at 9:30am. Would like Committee blessing to use or rent a large part of the park/launch out of courtesy to public use of the park.

Ward- cannot limit use of the park and would like the park to remain open for all to use.

Nass – 'warn' public about heavy use, do not close park

Ward – issue a group meeting permit (group larger than 20 ppl)

Tietz – cars will not be parked at Cappie's?

Brown – we will shuttle users from the Johnson Creek High School

Ward – applicant disclose # of persons, arrangements of sanitation and garbage disposal, amplified sound system

Tietz – questioned timing of boat launch project

Nass/Payne motion approve the issuance of a group permit for the event. Motion passes 4/0

9. **Report from the Jefferson County Historical Site Preservation Council**

Foelker – walked Potter's Field and are requesting the Parks Committee to ok the designation of Potter's Field as a Historical Landmark.

Nass – Council has met twice. Working on a work plan for the Council. Questioned report frequency by Council to Committee.

10. Discussion and Possible Action on Nominating Potters Field as a Jefferson County Historical Landmark

Payne/Nass 4/0 (Kelly out of room)

11. Discussion and Possible Action on Rock River Park Boat Launch Bid Results

Wiesmann – RFP for boat launch project. Selecting lowest bidder - Viola. References are favorable.

Nass/Payne motion to accept the lowest bid by Viola for the Rock River Boat Launch improvements. Motion passes 5/0

Wiesmann – project takes about two weeks to complete once started, and is dependent on water levels and weather.

12. Discussion and Possible Action on Bee Hives on County Property

Nehmer – UW Ex/Workforce buildings, request to locate bee hives in Jefferson/Jefferson County. Dane County Parks has pollinator permit for Natural Resource Areas.

Nass – does Dane County charge a fee?

Wehmeier – concerns about location and access to the people.

Kelly – are honey bees a native species? Do they fit within the native pollinators?

Nehmer – parameters for placement

Nass, Payne, Foelker – no problem

Kelly – research effects on indigenous species already in existence.

Nehmer – will do more research

13. Discussion and Possible Action on Participating as a Pilot Community Setting Priorities and Management for the use of Acquired Flood Lands

Nehmer – same item as June Meeting discussion. Should attempt to participate in the project. Will aid Jefferson County Parks with a plan and public input process for management of the properties.

Wehmeier – property complaints, great opportunity. Less funding available for studying and setting management plans.

Payne – great opportunity

Tietz – get the group to help organize a plan for management

Wehmeier – plan will help with new property acquisitions

Payne/Foelker motion to participate. Motion passes 5/0

14. Discussion and Possible Action on Flood Mitigation Property W2745 Rock River Paradise

Nehmer – Parcels E/SE of Watertown. Nice parcels, good fishing, nice old oak trees. Newest complaint of partying, 4-wheelers, tree cutting and lawn mowing on the FMP. Question is – can the county sign it as “no trespassing”, could the town sign it as “no trespassing”? Yes and yes – quit claim deed to township with transfer of property restrictions.

Nass – is there public access to the river?

Concerned about increased traffic that goes onto the parcel. Property 21-3 is taking part of 21-4 and have hauled in large rocks. Town has been mowing the vacant lots.

Nass – delay making decision on property management until the plan is completed. Perhaps we can post “no vehicles, no dumping, no fishing, no hunting...” until the management plan is completed, and we will work with the Township on maintenance.

Nass/Foelker – motion to post signs (staff to create wording – complying within existing parks ordinance) to control misuse and to work with Township to discontinue mowing. 5/0

15. Discussion on the Interurban Trail Project

Nehmer – survey work Land Info Surveyor, Westbrook onsite last week, inspection of abutments and caissons and facings. PILOT test next Tuesday am. Watertown public works great partner assembled staff and boat in less than 24hour notice to complete the testing.

16. Discussion on Glacial Heritage Area (GHA) –Friends of GHA

No Friends of GHA to comment

17. Discussion and Possible Action on 2018 Parks Department Budget

Nehmer – Cap finance plan in packet. Interurban Trail engineering in request, Korth Lane @ \$100,000 proposed as joint partnership between county and township. Town Chair would like to have the County do the surveying as for the road ROW. Large part of road use is by Korth Park users.

Nehmer – 2018 Levee goals/guidance 2017 @ \$761,111, 2018 @ \$762,716

Nass/Payne – motioned to move forward as presented. Motion passes 5/0

18. **Review of Financial Statements (May, 2017) and Department Update – Parks Department**

Nehmer – financials look good. Wiesmann in process of Capital truck and lawnmower purchase(s). Finally fully staffed.

19. **Discussion on the Mason Farm Jamboree**

Wiesmann – 6th annual event. 250 attendees (approx.). Continued interest in wildlife/bee keeping/basket weaving displays. Log home interpretative panels are installed.

20. **Discussion on Brew with a View**

Nehmer – Had the most successful event as of yet. Funds raised that night will be committed to the Natural Resources Foundation.

Tietz – great music

Payne – great night

Nimm – next event on July 20

21. **Convene in Closed Session Pursuant to s.19.85 (1)(e), Wis. Stats. for the purpose of deliberating or negotiating the purchasing of public properties, the investing of public funds, or conducting other specified public business, whenever competitive or bargaining reasons require a closed session to discuss the purchase of real property to expand the footprint of a Jefferson County park**

Nass/Foelker motion to convene in closed session at 10:50am.

Ayes: Nass, Payne, Foelker, Kelly, Tietz

Nass/Foelker motion to reconvene in open session at 10:55am.

Ayes: Nass, Payne, Foelker, Kelly, Tietz

22. **Reconvene in open session for possible action on items discussed in closed session**

Kelly/Foelker motion to not pursue purchase but would consider acquisition otherwise. Motion passes 5/0

23. **Adjourn**

Nass/Foelker motion to adjourn at 11:03am. Motion passes 5/0

Next scheduled meetings: August 7, 2017 – keep as scheduled
 September 4, 2017 – move to 9/11
 October 2, 2017

Respectfully Submitted,

Mary Nimm, Program Assistant

Canine friends invited to splash in Jefferson pool

JEFFERSON — The Jefferson County Parks Department — in cooperation with the City of Jefferson Parks, Recreation & Forestry Department — invites all canine friends and their owners to come to the Jefferson Aquatic Center on Sunday, Aug. 27, from noon until 3 p.m. to enjoy the pool solely for our canine friends.

Enjoy watching your dog play in the water! This event promises to be fun for the whole family.

The suggested donation is \$5 per dog; all proceeds will benefit the Jefferson County Dog Park.

The Jefferson Aquatic Center is located at 518 N. Fifield Ave. in Jefferson.

For additional information, contact the Jefferson County Parks Department at (920) 674-7260, 311 S. Center Ave. in Jefferson or dogpark@jefferson-countywi.gov



POTTER'S FIELD — The Jefferson County Historic Sites Preservation Council forwarded a resolution to designate Jefferson County Potter's Field as a county historic landmark. Jefferson County Potter's Field consists of three associated cemetery areas created and utilized by the Jefferson County Poor Farm, located just west of County Highway W, from 1856 to 1950. The cemeteries also were used by the Jefferson County Insane Asylum, built sometime after 1878, and the Forest Lawn Sanitarium, built in the 1920s. Members of the council include Supervisors Ed Morse, Matt Foelker and Steve Nass. Also, Robert Birmingham and Steve Mode. Shown clockwise, starting at left, are scenes from the council's visit to Potter's Field: Foelker, Maryann Gleisner and Mode talk about the gravestones; Morse, left, and Birmingham walk the site; Nass, left, and Foelker look at a large pile of rocks and some of the headstones; The stone memorial marker was installed in 2004 to commemorate the site; Headstones more often were marked by number instead of by name and date of death. A related story appears on A1. View all photos at dailyunion.mycanture.com — Daily Union



Tyranena teaming up with Jefferson County Parks

LAKE MILLS — Nestled in the heart of south-central Wisconsin, just a stone's throw from both Madison and Milwaukee, Jefferson County is home to rolling hills, grassy prairies and lovely shorelines offering enjoyment and recreational opportunities to residents and visitors alike.

With over a dozen county parks highlighting the natural beauty of the area, it's hard for anyone to pick a favorite. But, perched atop a lush hill, with sweeping views of a resplendent Rock Lake, lays Korth Park — the crown jewel of the

county's park system.

Located minutes west of downtown Lake Mills, the 89-acre park boasts a massive timber frame pavilion, miles of prairie walking trails, spectacular lake views and ... a beer hall?

Well, not typically, but for three evenings this summer, Korth Park not only will showcase Rock Lake in all its summer glory but also the county's only microbrewery for a series of special events appropriately coined "Brew with a View."

While the Jefferson County Parks Department is tasked

with preserving, maintaining and improving the county's natural resources, as with most things these days the mission has a growing pricetag. But, as it turns out, Jefferson County has another great resource to be tapped that just could be the answer: Tyranena Brewing Company.

For one last Thursday evening in 2017, on Aug. 24, Korth Park will be reminiscent of a traditional German Biergarten ... but with a modern twist. From 5 to 8:30 p.m. there will, of course, be a great outdoor space, with picnic tables and fresh air, where patrons can gather to sip a variety of locally brewed craft beers from Tyranena Brewing Company, listen to music and enjoy a fantastic meal.

But rather than polka and pretzels, each Brew with a View will host more eclectic flavors.

On Aug. 24, while Hearthfire performs a mixture of traditional, contemporary and original Celtic rock music, Doyle's Dogs, El Grito Taqueria and Flying Cow Pizza will be dishing out delectable dinners to the masses.

Brew with a View will provide a family-friendly environment; not only does Korth Park offer a large playground for children to enjoy but, for non-alcoholic options, Tyranena's house-made root beer soda will be available.

Due to limited parking, the Parks Department requests that attendees carpool whenever possible. The park also is accessible via an offshoot of the Glacial Drumlin Bike Trail.

Persons interested in attending can find more information on each Brew with a View event on Tyranena Brewing Company's website: <http://tyranena.com> (link under "Events & Happenings") or directly at <http://www.tyranena.com/BWAV/2017>

/



INTERURBAN TRAIL GRANT — The Greater Watertown Community Health Foundation has awarded a \$100,000 Changemaker Health Grant to the Jefferson County Parks Department. The funds will be used by Jefferson County Parks to complete a bridge crossing of the Rock River as part of Phase I of the Watertown to Oconomowoc Interurban Trail. Trails like this are good for our local economy, our health, and our environment. Outdoor Recreation and Healthy Living are a primary focus of the Jefferson County Parks Department. The department works to improve access to physical activity through walking and biking paths. These activities help the Greater Watertown Community Foundation to address their mission of enhancing the health and well-being of the greater Watertown area. Jefferson County is continuing to raise funds for this trail. Anyone interested in helping to fund the trail is encouraged to contact Joe Nehmer or Mary Nimm at (920) 674-7260 or jeffco-parks@jeffersoncountyiwi.gov. Pictured above are Joe Nehmer, director of Jefferson County Parks; Augie Tietz, Chair, Jefferson County Parks Committee; Mary Nimm, Jefferson County Parks program assistant; Tina Crave, president and CEO, Greater Watertown Community Health Foundation.



08.20.2017 09:54



Dr. J.S. Garman Nature Preserve Signage Plan

7/21/2017

General Signage Guidelines

- Place signs at each intersection where park users need to make a decision.
- Focus directional signs on landmarks and destinations.
 - Native American Mounds
 - Nature Trail
 - Garman Parking Lot
 - Waterloo Regional Trailhead Facility
 - Future Destinations may include:
 - Point of Highest Elevation
 - Overlooks and Scenic Views
- Utilize consistent materials, design, and placement in each park to make signage easy to understand by users.
- Sample signs and kiosks are examples for discussion purposes.

List of Proposed Signs – Park Map on last page

1. Entrance Sign at Fox Lane and McKay Way

2. Garman Rock

- A landmark and focal point.
- Simple and clean



3. Entrance Kiosk

- Focal point at the beginning of the trail to draw users into the trail system.
- Park Information and Rules
- Park Highlights
- Park Map
- Information on current Park maintenance and native plant community restoration activities.
- Directional Signs to Mounds, Waterloo Regional Trailhead Facility, and Nature Trail
- Donation Box
- Dog Bags



4. Nature Trail Interpretive Signs

- Nature Trail Directional Sign
- Potential Interpretive Sign Suggestions

Birds

- Pictures of commonly seen birds.
- Pictures of uncommon birds that live here such as pileated woodpecker.
- Description of the habitat that brings the birds here.

Wildlife

- Pictures of commonly seen wildlife.
- Description of habitat and food sources.



Common Flowering Native Plants

- Pictures and description of flowering plants commonly seen in the Preserve.
- Description of the existing woodland habitat.

Uncommon Native Plants

- Pictures and description of the Yellow Giant Hyssop, *Agastache nepetoides* (savanna indicator species) and other uncommon plants found in the Preserve and what their presence means as far as former plant communities in the Preserve.

Trees

- Pictures of common native trees in the preserve and what woodland and savanna plant communities look like.
- Species found in the Preserve, such as basswood and maple that were not here originally.

Invasive Plants

- A sign already exists with a boot scraper.
- Pictures of common invasive plants such as garlic mustard, burning bush, buckthorn, prickly ash, and box elder, and why they are being removed – crowding out more desirable plants that provide diverse food sources for wildlife.



Native Community Restoration

- A long-term restoration plan is being developed that could drastically change the look of the preserve.
- Pictures of what the native communities could look like.
- Possible restoration activities.

Glacial Features and Geology

- Brief description of the Wisconsin Glaciation creating the landforms in the Preserve.
- Uniqueness of the drumlin field of which the Preserve is a part.
- Boulder train of large stone brought down from Canada by the glacier.
- One sign, either along the Nature Trail or at the Native American Mounds, could be a touchable map of the topography and relief of the preserve.

Area History

- Brief history of the Waterloo area.
- Map of 1830's Surveyor Notes, found in the Master Plan, indicates most trees in the area were black, white, and bur oak, and hickory.

Native American History

- Large interpretive panels will be located at the Native American Mounds. A small sign could be included along the Nature Trail as a teaser for the Mounds on the hill and for users who don't hike to the Mounds.
- A brief history of Native American culture and the mound builders.
- Picture of the Mounds on top of the hill.

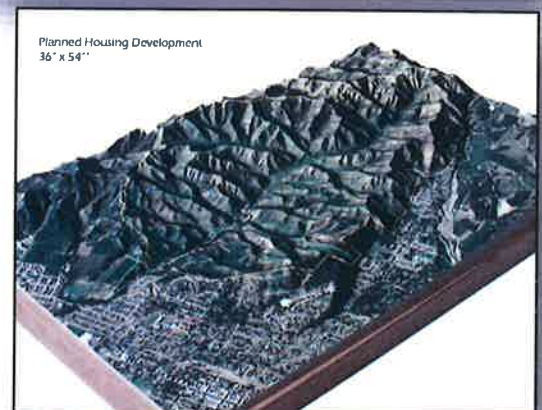
5. Trail Intersection

- Directional signs to Mounds and Garman Parking Lot
- You Are Here Map
- Benches



6. Native American Mound Interpretive Node

- Large Kiosk
 - Mound Interpretation and Restoration
 - Topography/Geology Interpretation with raised brass topography map
 - You Are Here Map
 - Directional Signs to Garman Parking and Waterloo Regional Trailhead Parking, and potentially the high point.
- Rustic Stone Sitting Wall
- Benches

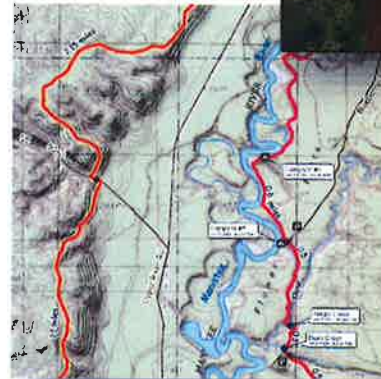


7. Native American Mound Interpretive Sign and Bench around the south end of the Mounds



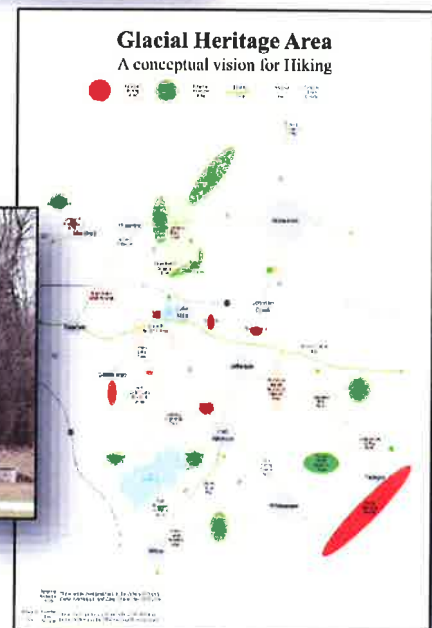
8. Trail Intersection - Directional Signs and You Are Here Map (Trail Intersection may be modified)

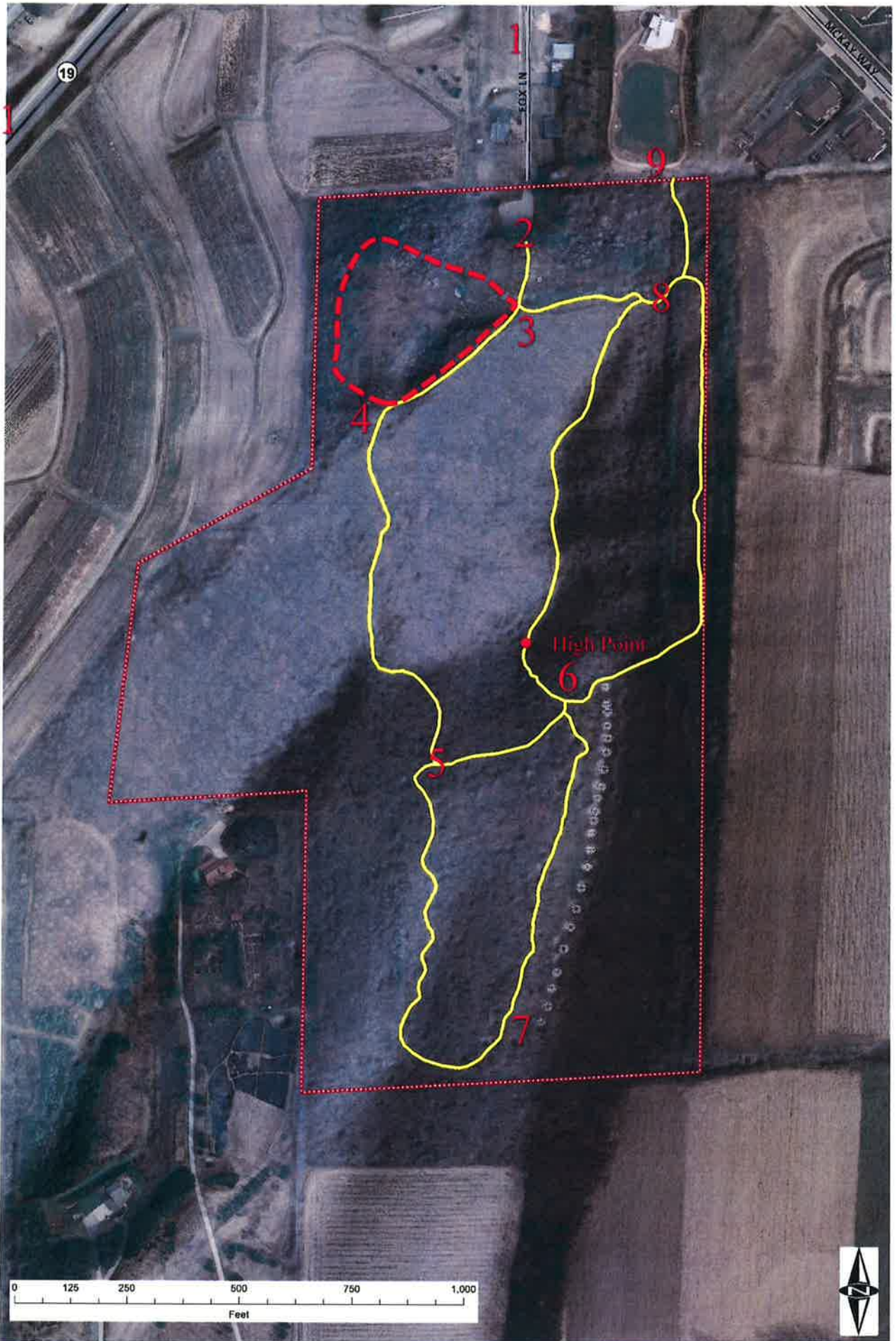
- Directional signs to Mounds, Garman Parking, Nature Trail, and the Waterloo Regional Trail Facility
- You are here map
- Benches



9. Waterloo Regional Trailhead Facility Kiosk

- GHA Regional Map
- Garman Trail Map
- Directional Signs to Mounds, Garman Parking, Nature Trail





GARMAN TRAIL SIGNAGE

Scoping and Sequencing: I broke out the following projects in various years knowing that a large portion of the annual funds available will be dedicated to restoring the preserves ecosystem. If additional funds are deemed available, any of the following projects could be moved up.

List of Proposed Signs as defined in in the "Dr. J.S. Garman Nature Preserve Signage Plan" 7/21/17

1. Garman NP Entrance Sign Fox Lane – Replace and Upgrade to Larger Sign 2017
2. Garman Rock (2017)
 - a. Remove kiosk and clean up area adjacent to the memorial stone.
3. Entrance Kiosk – Above trail at first trail crossing (2017/18)
 - a. Design, Engineering, Bidding – 2017/18 (Retainer Firm)
 - i. Multiple panels with at least one panel being interchangeable to relate the preserves changing management and updates.
 - b. Installation – 2018 (bid contract)
 - c. Entrance Kiosk Content development – 2018 (contract)
 - i. Standard Preserve Map with artistic representation of trees, hillshade, trails, mounds, interpretive nodes, and nature trail. Include you are here and orient to the direction of the kiosk user.
 - ii. Interpretation of preserves special features, directions to points of interest,
4. Nature Trail Interpretive Signs (2020/2021)
 - a. Design and build nature trail with hard surface for ada access. (2020)
 - i. Clearing brush and ground cover
 - ii. Hauling, grading, compacting trail surface.
 - b. Develop concepts for the 10 outlined natural and cultural features of the park, bid to design firm for development. (2021)
 - i. Design around user groups including school aged kids.
 - ii. Concept relieve structures for glacial drumlins, morains, and kettles.
 - iii. Animal tracks on paved or concrete surfaces?
5. Trail Intersection Signage (2018)

- a. Incorporate the Preserve map into a comprehensive “you are here” map for each trail intersection. Add arrows and destinations to each sign. Purchase signs and posts
- 6. Native American Mound Interpretive Node at the top of the Drumlin (2019/2020)
 - a. Engineering and design of structure – 2019/20 (contract)
 - i. Panel holders
 - ii. Sitting wall and/or permanent benches
 - 1. Incorporate native stone and logs?
 - b. Installation – 2020 (contract)
 - c. Content development – 2019/2020 (contract)
 - i. 3 signs 36” x 48” installed into structure above
- 7. Native American Walking Interpretation along mounds (2019/2020)
 - a. Wrap the two previous projects together in one RPF.
 - i. Develop Central Wisconsin Native American Culture Interpretation (4 signs – 24” x 36” + holders)
 - ii. Trail walking interp of Wisconsin Mounds – conical, effigy, entaglio.
- 8. Waterloo Regional Trailhead Facility (2020)
 - a. Interpretation of GHA, maps, brochures, and Garman trail map.
 - b. Directional signage to mounds, parking area, nature trail, restrooms, etc.

Task	2017	2018	2019	2020	2021
1 - \$250.00	x				
2 - \$0	x				
3 - \$25,000.00	x	x			
4 - \$30,000.00				x	x
5 - \$1,500.00		x			
6 - \$30,000.00			x	x	
7 – Included above			x	x	
8 - \$1,500.00				x	

All pricing is subject to donations of labor and materials and is a general estimate. Timelines are also for reference only. This accounts for the majority of design for structures and interpretive materials being developed by outside firms and professionals and structures being constructed by local contractors.

#14

Jefferson County
Parks Totals

Date Ran 7/21/2017
Period 6
Year 2017

Business Unit	Description	Current Period Actual	Current Period Budget	YTD Actual	YTD Budget	Prorated Variance	Total Budget	Annual Remaining	Percentage Of Budget
1801 Parks	Revenue	(68,002.84)	(65,735.00)	(390,657.43)	(394,410.00)	3,752.57	(788,820.00)	(398,162.57)	49.52%
	Expenditures	82,394.85	74,842.38	360,278.64	449,054.27	(88,775.63)	898,108.54	537,829.90	40.12%
	Other Finances	-	-	-	-	-	-	-	#DIV/0!
Total		14,392.01	9,107.38	(30,378.79)	54,644.27	(85,023.06)	109,288.54	139,667.33	0.00%
1806 Carol Liddle	Revenue	(52.02)	(25.00)	(260.88)	(150.00)	(110.88)	(300.00)	(39.12)	86.96%
	Expenditures	-	6,855.63	-	41,133.78	(41,133.78)	82,267.56	82,267.56	0.00%
	Other Finances	-	-	-	-	-	-	-	#DIV/0!
Total		(52.02)	6,830.63	(260.88)	40,983.78	(41,244.66)	81,967.56	82,228.44	0.00%
1809 Carlin Weld	Revenue	(5.00)	-	(109.40)	-	(109.40)	-	109.40	#DIV/0!
	Expenditures	-	1,746.78	-	10,480.68	(10,480.68)	20,961.36	20,961.36	0.00%
	Other Finances	-	-	-	-	-	-	-	#DIV/0!
Total		(5.00)	1,746.78	(109.40)	10,480.68	(10,590.08)	20,961.36	21,070.76	0.00%
1811 Korth Park	Revenue	-	-	-	-	-	-	-	#DIV/0!
	Expenditures	-	-	-	-	-	-	-	#DIV/0!
	Other Finances	-	-	-	-	-	-	-	#DIV/0!
Total		-	-	-	-	-	-	-	0.00%
1812 Carnes Park	Revenue	(1,935.16)	(1,938.00)	(13,667.58)	(11,628.00)	(2,039.58)	(23,256.00)	(9,588.42)	58.77%
	Expenditures	1,910.30	13,343.22	3,533.55	80,059.31	(76,525.76)	160,118.62	156,585.07	2.21%
	Other Finances	-	-	-	-	-	-	-	#DIV/0!
Total		(24.86)	11,405.22	(10,134.03)	68,431.31	(78,565.34)	136,862.62	146,996.65	0.00%
1813 Park Buildings	Revenue	(1,357.17)	(1,357.17)	(8,143.02)	(8,143.00)	(0.02)	(16,286.00)	(8,142.98)	50.00%
	Expenditures	1,300.61	1,357.17	7,972.49	8,143.00	(170.51)	16,286.00	8,313.51	48.95%
	Other Finances	-	-	-	-	-	-	-	#DIV/0!
Total		(56.56)	(0.00)	(170.53)	-	(170.53)	-	170.53	0.00%
1814 Garman Nature	Revenue	(7.35)	-	(4,229.35)	-	(4,229.35)	-	4,229.35	#DIV/0!
	Expenditures	-	27.42	-	164.50	(164.50)	329.00	329.00	0.00%
	Other Finances	-	0.02	-	0.10	(0.10)	0.19	0.19	0.00%
Total		(7.35)	27.43	(4,229.35)	164.60	(4,393.95)	329.19	4,558.54	0.00%
1816 Glacial Heritage	Revenue	-	-	-	-	-	-	-	#DIV/0!
	Expenditures	-	1,350.75	264.07	8,104.50	(7,840.43)	16,209.00	15,944.93	1.63%
	Other Finances	-	208.33	-	1,250.00	(1,250.00)	2,500.00	2,500.00	0.00%

Total		-	1,559.08	264.07	9,354.50	(9,090.43)	18,709.00	18,444.93	0.00%
1821 Snowmobile Trails	Revenue	-	(3,806.25)	-	(22,837.50)	22,837.50	(45,675.00)	(45,675.00)	0.00%
	Expenditures	-	3,806.25	-	22,837.50	(22,837.50)	45,675.00	45,675.00	0.00%
	Other Finances	-	-	-	-	-	-	-	#DIV/0!
Total		-	-	-	-	-	-	-	0.00%
1824 Bike Trail	Revenue	(104,100.00)	(854.17)	(104,941.55)	(5,125.00)	(99,816.55)	(10,250.00)	94,691.55	1023.82%
	Expenditures	24.00	10,100.08	24.00	60,600.50	(60,576.50)	121,201.00	121,177.00	0.02%
	Other Finances	-	(7,258.17)	-	(43,549.04)	43,549.04	(87,098.07)	(87,098.07)	0.00%
Total		(104,076.00)	1,987.74	(104,917.55)	11,926.47	(116,844.02)	23,852.93	128,770.48	0.00%
1826 Dog Park	Revenue	(4,676.92)	(3,166.67)	(30,148.34)	(19,000.00)	(11,148.34)	(38,000.00)	(7,851.66)	79.34%
	Expenditures	2,773.51	7,687.25	10,415.04	46,123.50	(35,708.46)	92,247.00	81,831.96	11.29%
	Other Finances	-	2,088.74	-	12,532.46	(12,532.46)	25,064.91	25,064.91	0.00%
Total		(1,903.41)	6,609.33	(19,733.30)	39,655.96	(59,389.26)	79,311.91	99,045.21	0.00%
1840 Groundskeeping	Revenue	(10,119.26)	(4,386.67)	(31,487.74)	(26,320.00)	(5,167.74)	(52,640.00)	(21,152.26)	59.82%
	Expenditures	10,230.62	4,386.67	31,599.10	26,320.00	5,279.10	52,640.00	21,040.90	60.03%
	Other Finances	-	-	-	-	-	-	-	#DIV/0!
Total		111.36	-	111.36	-	111.36	-	(111.36)	0.00%
Total All Business Units	Revenue	(190,255.72)	(81,268.92)	(583,645.29)	(487,613.50)	(96,031.79)	(975,227.00)	(391,581.71)	59.85%
	Expenditures	98,633.89	125,503.59	414,086.89	753,021.54	(338,934.65)	1,506,043.08	1,091,956.19	27.50%
	Other Finances	-	(4,961.08)	-	(29,766.49)	29,766.49	(59,532.97)	(59,532.97)	0.00%
Grand Total Parks		(91,621.83)	39,273.59	(169,558.40)	235,641.56	(405,199.96)	471,283.11	640,841.51	-35.98%

#14/

Business Unit	Description	Current Period Actual	Current Period Budget	YTD Actual	YTD Budget	Prorated Variance	Total Budget	Annual Remaining	Percentage Of Budget
1801 Parks	Revenue	(62,951.83)	(65,735.00)	(453,609.26)	(460,145.00)	6,535.74	(788,820.00)	(335,210.74)	57.50%
	Expenditures	66,719.38	74,842.38	428,021.14	523,896.65	(95,875.51)	898,108.54	470,087.40	47.66%
	Other Finances	-	-	-	-	-	-	-	#DIV/0!
Total		3,767.55	9,107.38	(25,588.12)	63,751.65	(89,339.77)	109,288.54	134,876.66	0.00%
1806 Carol Liddle	Revenue	(61.76)	(25.00)	(322.64)	(175.00)	(147.64)	(300.00)	22.64	107.55%
	Expenditures	-	6,855.63	-	47,989.41	(47,989.41)	82,267.56	82,267.56	0.00%
	Other Finances	-	-	-	-	-	-	-	#DIV/0!
Total		(61.76)	6,830.63	(322.64)	47,814.41	(48,137.05)	81,967.56	82,290.20	0.00%
1809 Carlin Weld	Revenue	(38.00)	-	(147.40)	-	(147.40)	-	147.40	#DIV/0!
	Expenditures	-	1,746.78	-	12,227.46	(12,227.46)	20,961.36	20,961.36	0.00%
	Other Finances	-	-	-	-	-	-	-	#DIV/0!
Total		(38.00)	1,746.78	(147.40)	12,227.46	(12,374.86)	20,961.36	21,108.76	0.00%
1811 Korth Park	Revenue	-	-	-	-	-	-	-	#DIV/0!
	Expenditures	-	-	-	-	-	-	-	#DIV/0!
	Other Finances	-	-	-	-	-	-	-	#DIV/0!
Total		-	-	-	-	-	-	-	0.00%
1812 Carnes Park	Revenue	(89.64)	(1,938.00)	(13,757.22)	(13,566.00)	(191.22)	(23,256.00)	(9,498.78)	59.16%
	Expenditures	-	13,343.22	3,533.55	93,402.53	(89,868.98)	160,118.62	156,585.07	2.21%
	Other Finances	-	-	-	-	-	-	-	#DIV/0!
Total		(89.64)	11,405.22	(10,223.67)	79,836.53	(90,060.20)	136,862.62	147,086.29	0.00%
1813 Park Buildings	Revenue	(1,357.17)	(1,357.17)	(9,500.19)	(9,500.17)	(0.02)	(16,286.00)	(6,785.81)	58.33%
	Expenditures	1,377.96	1,357.17	9,350.45	9,500.17	(149.72)	16,286.00	6,935.55	57.41%
	Other Finances	-	-	-	-	-	-	-	#DIV/0!
Total		20.79	(0.00)	(149.74)	(0.00)	(149.74)	-	149.74	0.00%
1814 Garman Nature	Revenue	-	-	(4,229.35)	-	(4,229.35)	-	4,229.35	#DIV/0!
	Expenditures	500.00	27.42	500.00	191.92	308.08	329.00	(171.00)	151.98%
	Other Finances	-	0.02	-	0.11	(0.11)	0.19	0.19	0.00%
Total		500.00	27.43	(3,729.35)	192.03	(3,921.38)	329.19	4,058.54	0.00%
1816 Glacial Heritage	Revenue	-	-	-	-	-	-	-	#DIV/0!
	Expenditures	-	1,350.75	264.07	9,455.25	(9,191.18)	16,209.00	15,944.93	1.63%
	Other Finances	-	208.33	-	1,458.33	(1,458.33)	2,500.00	2,500.00	0.00%

Total		-	1,559.08	264.07	10,913.58	(10,649.51)	18,709.00	18,444.93	0.00%
1821 Snowmobile Trails	Revenue	-	(3,806.25)	-	(26,643.75)	26,643.75	(45,675.00)	(45,675.00)	0.00%
	Expenditures	-	3,806.25	-	26,643.75	(26,643.75)	45,675.00	45,675.00	0.00%
	Other Finances	-	-	-	-	-	-	-	#DIV/0!
Total		-	-	-	-	-	-	-	0.00%
1824 Bike Trail	Revenue	(13,657.50)	(854.17)	(118,599.05)	(5,979.17)	(112,619.88)	(10,250.00)	108,349.05	1157.06%
	Expenditures	-	10,100.08	24.00	70,700.58	(70,676.58)	121,201.00	121,177.00	0.02%
	Other Finances	-	(7,258.17)	-	(50,807.21)	50,807.21	(87,098.07)	(87,098.07)	0.00%
Total		(13,657.50)	1,987.74	(118,575.05)	13,914.21	(132,489.26)	23,852.93	142,427.98	0.00%
1826 Dog Park	Revenue	(3,953.54)	(3,166.67)	(34,101.88)	(22,166.67)	(11,935.21)	(38,000.00)	(3,898.12)	89.74%
	Expenditures	4,775.70	7,687.25	15,190.74	53,810.75	(38,620.01)	92,247.00	77,056.26	16.47%
	Other Finances	-	2,088.74	-	14,621.20	(14,621.20)	25,064.91	25,064.91	0.00%
Total		822.16	6,609.33	(18,911.14)	46,265.28	(65,176.42)	79,311.91	98,223.05	0.00%
1840 Groundskeeping	Revenue	(5,779.46)	(4,386.67)	(37,267.20)	(30,706.67)	(6,560.53)	(52,640.00)	(15,372.80)	70.80%
	Expenditures	5,718.05	4,386.67	37,317.15	30,706.67	6,610.48	52,640.00	15,322.85	70.89%
	Other Finances	-	-	-	-	-	-	-	#DIV/0!
Total		(61.41)	-	49.95	(0.00)	49.95	-	(49.95)	0.00%
Total All Business Units	Revenue	(87,888.90)	(81,268.92)	(671,534.19)	(568,882.42)	(102,651.77)	(975,227.00)	(303,692.81)	68.86%
	Expenditures	79,091.09	125,503.59	494,201.10	878,525.13	(384,324.03)	1,506,043.08	1,011,841.98	32.81%
	Other Finances	-	(4,961.08)	-	(34,727.57)	34,727.57	(59,532.97)	(59,532.97)	0.00%
Grand Total Parks		(8,797.81)	39,273.59	(177,333.09)	274,915.15	(452,248.24)	471,283.11	648,616.20	-37.63%

#14

Mary Nimm

Subject: FW: Dog Dayz 2017

From: Mary Nimm <maryn@jeffersoncountywi.gov>
Sent: Sunday, August 27, 2017 3:46 PM
To: Cyndi Keller; Bill AndLaura; Dog Park
Cc: Kaela Hutter; Joe Nehmer
Subject: Dog Dayz 2017

Today we had 79 dogs and \$388.00 in donations. There were a few who didn't pay and a few who paid a little extra.

Thank you Cyndi to you and your staff for opening the pool to us again this year.
We really do appreciate all that you do.

Sincerely,

Mary S. Nimm
Program Assistant
Jefferson County Parks Department
Courthouse – Room 204
311 South Center Avenue
Jefferson, WI 53549



✉: maryn@jeffersoncountywi.gov
☎: 920-674-7260

<http://www.jeffersoncountywi.gov/>

*"Keep close to Nature's heart... and break clear away, once in a while, and climb a mountain or spend a week in the woods. Wash your spirit clean."
~ John Muir*

#17

From: [Stacey Schraufnager](#)
To: [Joe Nehmer](#); [Mary Nimm](#)
Subject: BWAV!
Date: Friday, August 25, 2017 11:35:41 AM

Another successful BWAV in the books. And I have an envelope for you! Please let me know when someone will be by for it.

Here's our BWAV season total. Not too shabby!

	15-Jun	20-Jul	24-Aug
Income	\$ 6,795.00	\$ 5,599.00	\$ 6,381.00
Band	\$ 450.00	\$ 375.00	\$ 250.00
Beer	\$ 1,722.50	\$ 1,424.50	\$ 1,835.00
Bartenders	\$ 165.00	\$ 185.00	\$ 190.00
	\$ 4,622.50	\$ 3,614.50	\$ 4,106.00

NET **\$ 12,178.00**

Obviously we had a little issue last night with parking... and I saw more "carry-ins" of wine and other beer than I would have liked (since they take away from the overall profitability)... but overall, I think we've got a good thing going here. Assuming we are going to proceed with 3 events again next year, I figured I'd mention this now.... better to have plans to deal with the issue before it is presented at a County Board Meeting or griped about in the local paper.

The Deputy I spoke with mentioned reporting to his sergeant and wanting to have a meeting about the event. He stated that his main concern (and what should be mine) was that if there was a medical emergency, he didn't believe that an ambulance could get up Korth Lane. He mentioned putting up no parking signs along one side of the road, though that would obviously impact our potential attendance. If people can't park, they may not come back.

I'm not sure if there are any other parking options... I hate to have to orchestrate shuttles but... maybe we could figure something out to allow people to park over on Finch Brothers Lane? There is some parking there, near the trailhead. Or perhaps some sort of ride from Elm Point? Quite a few people were parked out on Hwy S, even when I headed out. Is that allowed? It seemed like the shoulders were mowed but that could have been a coincidence. I know, a few years back, Dow Didion mentioned to me that he had some people movers; I could certainly reach out to him to inquire about them (but we would still need drivers...). Does the County have anything like that? Just thoughts...

Perhaps it is a moot point; Hope had mentioned that the County and Town were planning to improve the road and add parking on the sides. I said as much to the Deputy, which mildly

pacified him. Discussions that occurred during the event (with Mary and, I believe, Steve Nass) sounded like the County may seek to involve the Sheriff's department in parking in the future. Anyway, just wanted to know how to address this situation should someone contact me again and get the ball rolling on solutions for next year. :)

I think I'd also like to have someone from the County or Parks Department make an announcement during the performance (maybe around 6 pm) to remind people that the events benefit the Parks Department.

Thanks!!

Stacey Schraufnagel
Tyranena Brewing Company
1025 Owen Street | PO Box 736
Lake Mills, WI 53551
920-648-8699 | Fax: 920-648-6710
www.tyranena.com
www.twitter.com/tyranena
www.facebook.com/tyranena